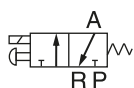


Valve

3V1
3V2
3V2M
3V3
3V100
3V200
3V300
4V100
4V200
4V300
4V400
HY-S1
HY-S2
HY-S3
HY-S4
4M
3V Manifold
4V Manifold
Coil
3A100
3A200
3A300
4A100
4A200
4A300
4A400
3A Manifold
4A Manifold
VF3000
VF5000
SY
SY Manifold
MVSD-180
MVSC-220
MVSC-260
MVSC-300
MVSC-460
HB10
3H
4H
TSV
3R
4R
HSV
4HV/4HVL
HV
K ²⁴ ₃₄
MOV
JM
MSV
XQ ²³ ₂₅
3F/3FM
4F
FV
K ²³ ₂₅
ASC
RE
QE
ST
KA
XQ
AQ



Symbol



Product feature

1. Direct acting type and normally closed mode, flexible in direction change.
2. No need to add oil for lubrication.
3. Several valves can be installed integrately to save installation space.
4. Affiliated manual devices are equipped to facilitate installation and debugging.
5. Several standard voltage grades are optional.

Specifications

Model	3V1-M5	3V1-06
Fluid	Air (to be filtered by 40µm filter element)	
Acting	Direct acting	
Port size ①	M5	1/8"
Valve type	3 port 2 position	
Lubrication	Not required	
Operating pressure	0~0.8MPa(0~114psi)	
Proof pressure	1.2MPa(175psi)	
Temperature (°C)	-20~70	
Orifice size	Φ1.2mm	
Material of body	Aluminum alloy	

① PT thread, G thread and NPT thread are available.

Coil specifications

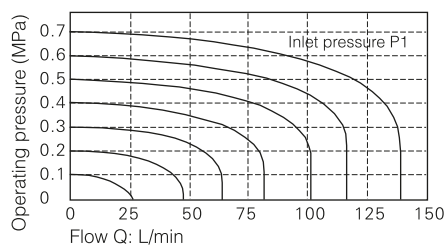
Item	Specifications				
Standard voltage	AC220V	AC110V	AC24V	DC24V	DC12V
Scope of voltage	AC: ±15% DC: ±10%				
Power consumption	4.5VA	4.5VA	5.0VA	3.0W	3.0W
Protection	IP65(DIN40050)				
Temperature classification	B class				
Electrical entry	Terminal, Grommet				
Activating time	0.05 sec and below				
Max. frequency ①	10 cycle/sec				

① The maximum actuation frequency is in the no-load state.

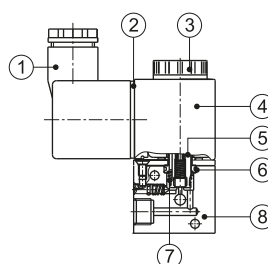
Ordering code

3V	1	06	A		
Model	Code	Port size	Voltage	Electrical entry	Thread type
3V Solenoid valve (3/2 way)	1 1 Series	M5 M5 06 1/8"	A AC220V B DC24V C AC110V E AC24V F DC12V	Blank Terminal I Grommet	Port size Thread type 1/8" Blank: PT G: G T: NPT M5 Not this code

Flow chart



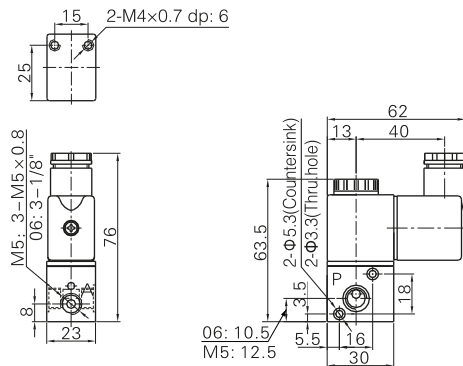
Inner structure



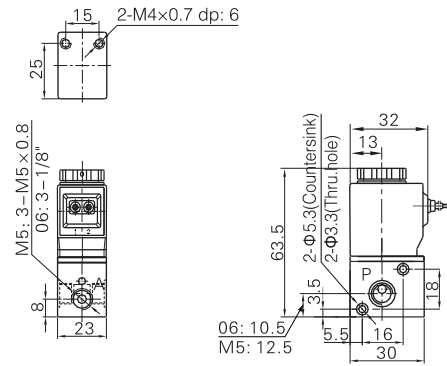
No.	Item	No.	Item
1	Connector	5	Armature
2	Gasket	6	O-ring
3	Coil nut	7	Return spring
4	Coil	8	Body

Dimensions

Terminal

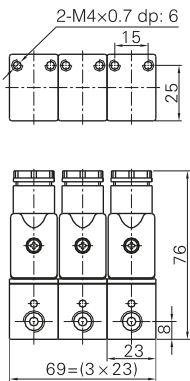


Grommet



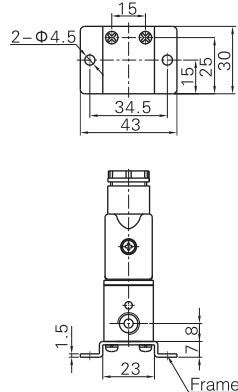
Series connection

Dimensions(3F)



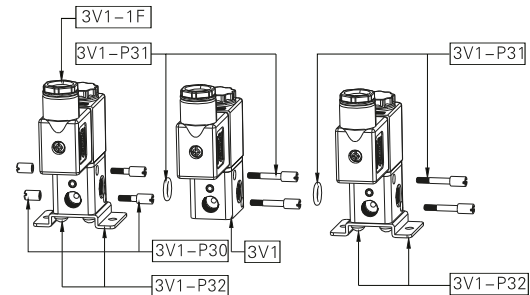
3F(3 Stations)

Dimensions(1F)



1F(1 Stations)

How to joint



Product structure

Connection amountQ.TY	3V1	3V1-P30	3V1-P31	3V1-P32
3V1-□-□-1F	1	0	0	1
3V1-□-□-2F	2	1	1	1
.....
3V1-□-□- nF	n	1	n-1	2

Note: "n" is the number of junction valve, and n ≥ 3.

Ordering code for series

3V	1	06	A		3F	
Model	Code	Port size	Voltage	Electrical entry	Number of stations	Thread type
3V Solenoid valve (3/2 way)	1 1 Series	M5 M5 06 1/8"	A AC220V B DC24V C AC110V E AC24V F DC12V	Blank Terminal I Grommet	1F 1 Station 2F 2 Stations 3F 3 Stations 20F 20 Stations	Port size Thread type 1/8" BlankP: T G: G T: NPT M5 Not this code

The above codes have included the series accessories, so it is unnecessary to order the accessories specially. But if you like, you could order as follows.

Code of accessories	Accessory name	Part code	Part name	Quantity
3V1-P30	Coupling screw assembly	F-3V1002B	Coupling screw(S)	2
		F-3V1003B	Coupling screw(M)	2
3V1-P31	Coupling screw assembly	GOR20008N75	O-Ring	1
		F-3V1004B	Coupling screw(L)	2
3V1-P32	Bracket assembly	F-3V1001B	Fixed mounting	1
		GSDA04008ZA	Cross round head screw	2

Valve

3V1

3V2

3V2M

3V3

3V100

3V200

3V300

4V100

4V200

4V300

4V400

HY-S1

HY-S2

HY-S3

HY-S4

4M

3V Manifold

4V Manifold

Coil

3A100

3A200

3A300

4A100

4A200

4A300

4A400

3A Manifold

4A Manifold

VF3000

VF5000

SY

SY Manifold

MVSD-180

MVSC-220

MVSC-260

MVSC-300

MVSC-460

HB10

3H

4H

TSV

3R

4R

HSV

4HV/4HVL

HV

K₂₄³⁴

MOV

JM

MSV

XQ₂₅²³

3F/3FM

4F

FV

K₂₅²³

ASC

RE

QE

ST

KA

XQ

AQ