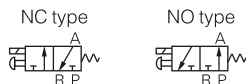


Valve

3V1
3V2
3V2M
3V3
3V100
3V200
3V300
4V100
4V200
4V300
4V400
HY-S1
HY-S2
HY-S3
HY-S4
4M
3V Manifold
4V Manifold
Coil
3A100
3A200
3A300
4A100
4A200
4A300
4A400
3A Manifold
4A Manifold
VF3000
VF5000
SY
SY Manifold
MVSD-180
MVSC-220
MVSC-260
MVSC-300
MVSC-460
HB10
3H
4H
TSV
3R
4R
HSV
4HV/4HVL
HV
K²⁴₃₄
MOV
JM
MSV
XQ²³₂₅
3F/3FM
4F
FV
K²³₂₅
ASC
RE
QE
ST
KA
XQ
AQ



Symbol



Product feature

1. Direct acting type and normally closed mode, flexible in direction change.
2. Normally closed and normally open types are optional.
3. Structure in coaxial blanking mode: leakage proof and large air flow.
4. No need to add oil for lubrication.
5. Affiliated manual devices are equipped to facilitate installation and debugging.
6. Valve needs to be used with the sub-base and allows various connection combinations to save space.
7. It is easy to examine when there are faults owing to the unified air intake and exhaust and unified wiring.
8. Flexible combination and strong expansion capability can make any combination or expansion of the numbers of direction control valves that are connected.
9. Can adjust the installation direction of special sub-base seal for NO or NC functions.

Ordering code

Ordering code for valve

3V2M		NC	A			
Model			Voltage	Electrical entry		
3V2M	Solenoid valve (3/2 way, with manifold)		A	AC220V	Blank	Terminal
			B	DC24V	I	Grommet
			C	AC110V		
			E	AC24V		
			F	DC12V		
Acting type						
NC		Normally closed				
NO		Normally opened				

Ordering code for manifold

3V2M		5F	D	
Model			Exhaust type	
3V2M	Solenoid valve (3/2 way, with manifold)	Blank	Centralized exhaust	
		D	Separated exhaust	
Number of stations		Thread type		
1F	1 Station	Blank	PT	
2F	2 Stations	G	G	
.....		T	NPT	
20F	20 Stations			

Note: Manifold kits contains manifold, seal and screw. The port size is only 1/8".

Ordering code for valve's group(Valve+manifold)

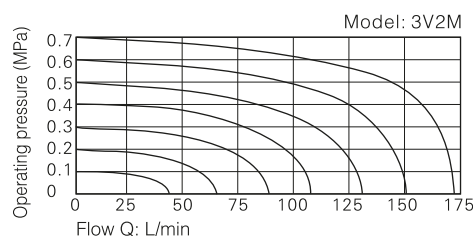
3V2M		NC	A		-	D	5F	
Model			Voltage	Electrical entry			Number of stations	Thread type
3V2M	Solenoid valve (3/2 way, with manifold)		A AC220V	Blank	Terminal		1F 1 Station	Blank PT
			B DC24V	I	Grommet		2F 2 Stations	G G
			C AC110V				T NPT
			E AC24V					
			F DC12V					
Acting type				Exhaust type				
NC	Normally closed			Blank	Centralized exhaust			
NO	Normally opened			D	Separated exhaust			

Ordering code for blank plate

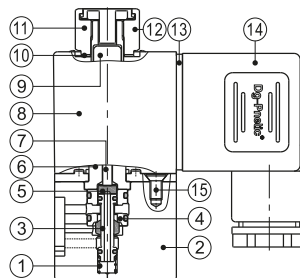
P	3V2M	R2
Assembly code	Model	Code
P Subassembly	3V2M Solenoid valve (3/2 way, with manifold)	R2 Blank plate for manifold

Note: Blank plate kits contains blank plate and screw.

Flow chart



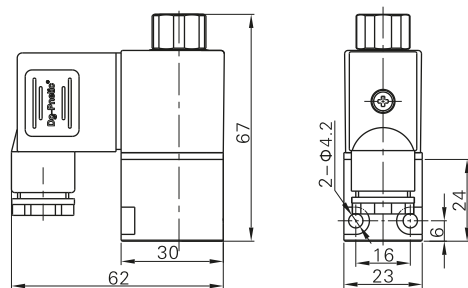
Inner structure



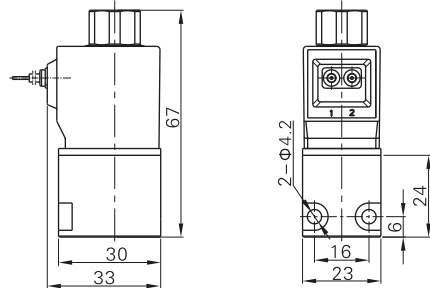
No.	Item	No.	Item
1	Spring	9	Armature
2	Body	10	Washer
3	Spool	11	Coil nut
4	Spacer	12	Manual button
5	Washer	13	Gasket
6	Electromagnet set	14	Connector
7	Man drill	15	Pilot screw
8	Coil		

Dimensions

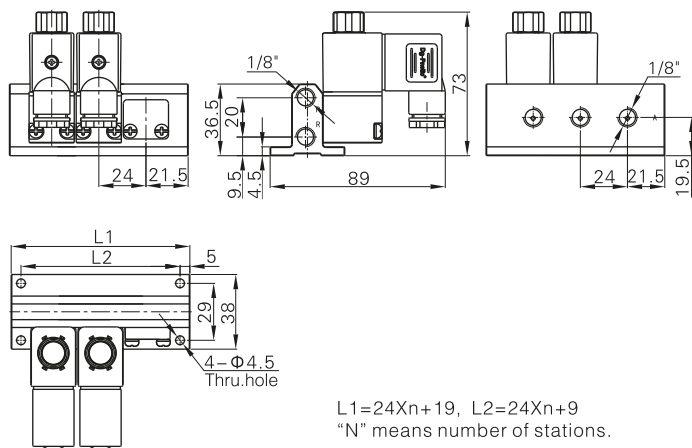
Valve (Terminal)



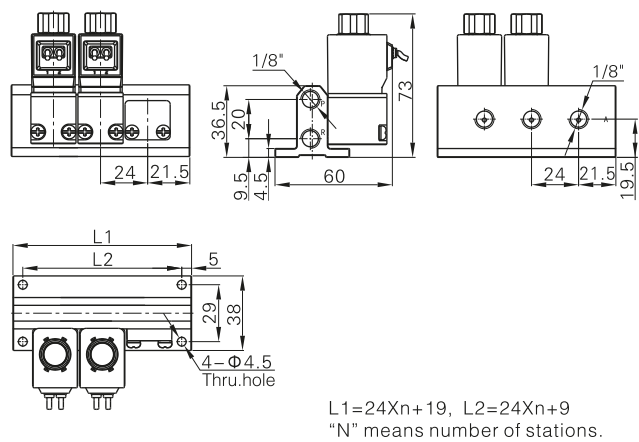
Valve (Grommet)



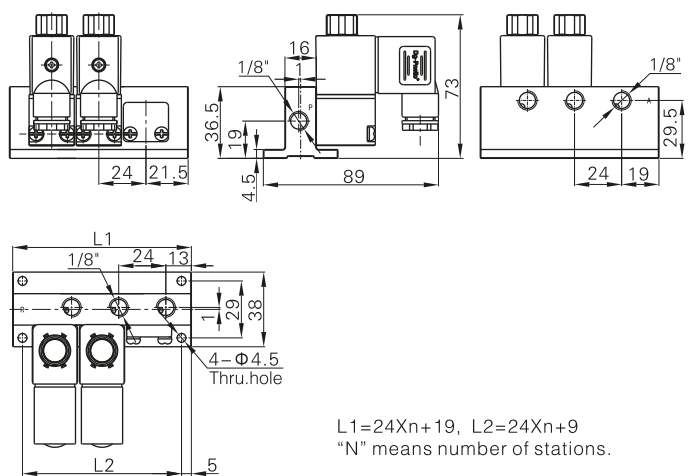
Valve's group (Terminal, centralized exhaust)



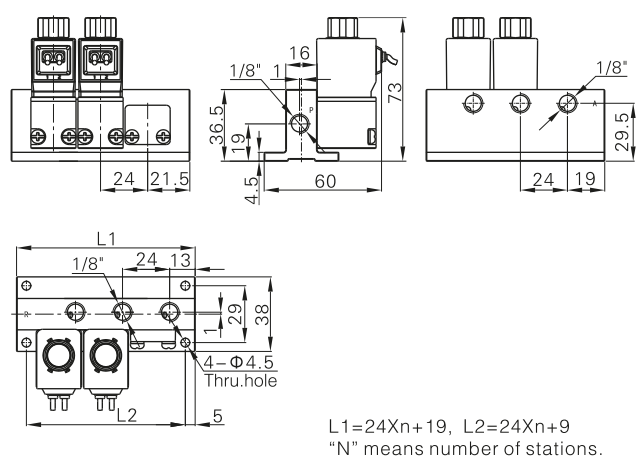
Valve's group (Terminal, separated exhaust)



Valve's group (Grommet, centralized exhaust)



Valve's group (Grommet, separated exhaust)



Valve

3V1

3V2

3V2M

3V3

3V100

3V200

3V300

4V100

4V200

4V300

4V400

HY-S1

HY-S2

HY-S3

HY-S4

4M

3V Manifold

4V Manifold

Coil

3A100

3A200

3A300

4A100

4A200

4A300

4A400

3A Manifold

4A Manifold

VF3000

VF5000

SY

SY Manifold

MVSD-180

MVSC-220

MVSC-260

MVSC-300

MVSC-460

HB10

3H

4H

TSV

3R

4R

HSV

4HV/4HVL

HV

K²⁴₃₄

MOV

JM

MSV

XQ²³₂₅

3F/3FM

4F

FV

K²³₂₅

ASC

RE

QE

ST

KA

XQ

AQ