

### Valve

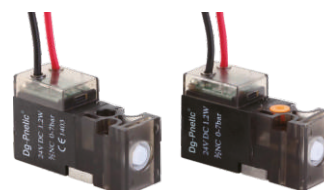
3V1  
3V2  
3V2M  
3V3  
3V100  
3V200  
3V300  
4V100  
4V200  
4V300  
4V400  
HY-S1  
HY-S2  
HY-S3  
HY-S4  
4M  
3V Manifold  
4V Manifold  
Coil  
3A100  
3A200  
3A300  
4A100  
4A200  
4A300  
4A400  
3A Manifold  
4A Manifold  
VF3000  
VF5000  
SY  
SY Manifold  
MVSD-180  
MVSC-220  
MVSC-260  
MVSC-300  
MVSC-460  
HB10  
3H  
4H  
TSV  
3R  
4R  
HSV  
4HV/4HVL  
HV  
K<sub>34</sub><sup>24</sup>  
MOV  
JM  
MSV  
XQ<sub>25</sub><sup>23</sup>  
3F/3FM  
4F  
FV  
K<sub>25</sub><sup>23</sup>  
ASC  
RE  
QE  
ST  
KA  
XQ  
AQ



HB10-2AL Series

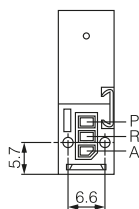
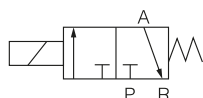


HB10-2AM Series

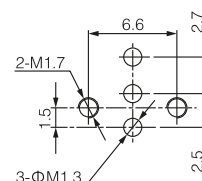


HB10-2AG Series

### Symbol



Hole bitmap



### Ordering code

HB10		1	A	L	H	P	1	<div></div>					
Model		Power		Voltage		Connection mode		Manual rod		Wiring specifications		Confluence board	
HB10	Miniature solenoid valve	1	1.2W	A	DC24V	L	Vertical type	H	With manual lever	1	Line length 300mm	01	1 Stations
		2	0.8W	B	DC12V	M	Straight line type	E	Without manual lever	2	Selects the line length	02	2 Stations
		3	0.3W	C	AC110V	G	Lead wire type					03	3 Stations
			D	AC220V									
			E	DC5V									
			F	DC6V									

Note: if you have any special requirements, please contact our company.

### Common specification

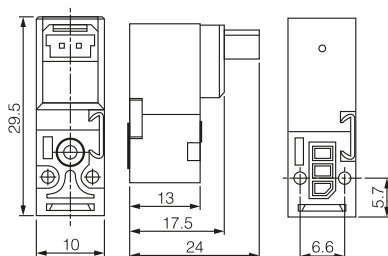
Model	HB10
Type	3/2 Often closed
Medium	Air, inertgases
Environment and fluid temperature	-10℃~+75℃ Non freezing
Working pressure	0~7 Bar
Valve orifice size	Φ0.7mm (Φ1.0mm)
P→A	cv: 0.008
	b: 0.11
A→R	cv: 0.015
	b: 0.35
Oil	No need

### Electromagnetic coil specification

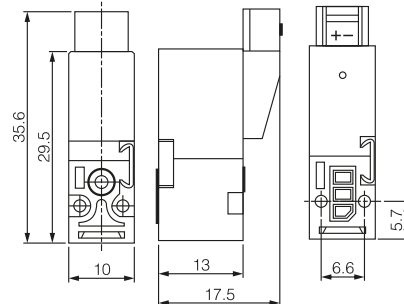
Wire leads	Vertical type (L type) Straight line type (M type) Lead wire type (G type)
Standard voltage	DC24V/12V
Allows voltage fluctuation	±15%
Power	1.2W/0.3W
Insulation class	H
Service life	>150 million times
Instruction light	LED
Operating frequency	>30Hz
Response time	6~8ms
Protective structures	Dust-proof

### Dimensions

#### HB10-2AL



#### HB10-2AM



#### HB10-2AG

