

### Valve

2P  
2V  
2W  
2W(Big)  
2WB  
2WBF  
US(2L)  
DG223  
DG523  
0927/0955  
PU220  
PU225  
VX  
QX  
PT  
Q24JH  
K23JH  
K25JH  
K25JH  
K35JH  
K23JD  
K25JD  
K25JK  
PV100  
PV200  
PV300  
PV400  
PV500  
**PV700**  
PV800  
PV1527  
PVN  
MV100  
MV200  
NAA  
GT  
K  
R  
FAL  
FP-M  
NTP  
SX



### Product feature

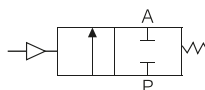
2/2-way Angle-Seat Valve  
Pneumatically Operated,  
for medium up to +180°C,  
Polished Actuator  
port connection DN 15-65

1. High flow rate;
2. Long life cycle;
3. Modular universal accessories can be assembled on NC and NO universal actuators' head;
4. Available with flow direction below or above seat;
5. Convenient conversion of the circuit function.

### Symbol

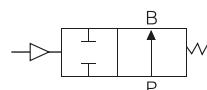
#### Control function A

(closed by spring force in rest position)



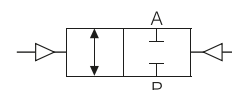
#### Control function B

(open in rest position)



#### Control function I

(double-acting actuator)



### Ordering code

#### PV700

##### Model

PV700 700 Seires angle seat valve

##### Actuator material code

S S.S. Actuator

#### S

#### 015

##### Nominal diameter

|    |        |    |        |
|----|--------|----|--------|
| 15 | 1/2"   | 40 | 1 1/2" |
| 20 | 3/4"   | 50 | 2"     |
| 25 | 1"     | 65 | 2 1/2" |
| 32 | 1 1/4" |    |        |

#### NC

##### Control function

|    |                            |
|----|----------------------------|
| NO | Normally open              |
| NC | Normally closed (standard) |

#### □

##### Body material

|       |                    |
|-------|--------------------|
| Blank | S.S 304 (standard) |
| 4     | S.S 316            |
| 5     | S.S 316L           |

#### S × 63mm

##### Acting type

|   |               |
|---|---------------|
| S | Single acting |
| D | Double acting |

### Actuator size

| Port size | Standard actuator size (mm) |  |
|-----------|-----------------------------|--|
|           | S.S.                        |  |
| DN10      | 40, 50                      |  |
| DN15      | 40, 50                      |  |
| DN20      | 50, 63, 80                  |  |
| DN25      | 50, 63, 90                  |  |
| DN32      | 63, 80                      |  |
| DN40      | 63, 80                      |  |
| DN50      | 63, 80                      |  |
| DN65      | 90, 100                     |  |

PV700 Series plunger pilot angle seat valve is propelled by a piston actuator, either single acting or double acting.

The actuator is made of stainless steel sheet, once punch formed, surface polished, thus more appealing, applicable to different working temperature: 2/2 Way stainless steel valve with big flow capacity V type seals ensure reliable and effective sealing.

Maintenance free, compatible with various accessories, Direction indicating, stroke limiting or manual switching can be assembled conveniently.