



### Features

1. Small air consumption, low operating cost, and good for environmental protection and energy saving.
2. Made of premium aluminium alloy, has high strength, excellent wear resistance and impact resistance.
3. The sturdy base has been turned and corrected many times, so it is not easy to break, and very stable.
4. Large magnetic impact with good powder falling effect. And the simple structure enables easy disassembly.
5. The tapping interval can be adjusted, and the reliable working performance guarantees low failure rate.

### Application

Vibrating table, filter screen, silo emptying, bulk material flushing and compaction, preventing pipelines from hanging on the wall of the silo, driving conveying devices, unloading tanks and other equipment.

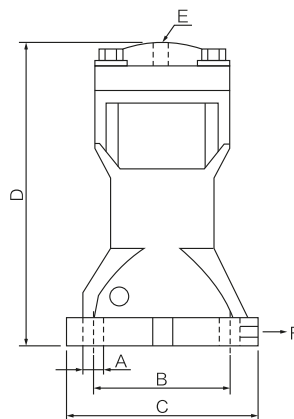
### Structure

Using compressed air as the power, and release it instantaneously, pushing the internal hammer head to hit the bottom, and transmitting the strong impulse to the wall of the hopper, effectively breaking the arch formed by the material, loosening the accumulated material, and achieving the purpose of smooth ash unloading.

### Specifications

Item type	Pneumatic percussion hammer
Material	Aluminium alloy
Connection method	Thread
Air inlet thread specification	1/4"
Air outlet thread specification	1/4"
Working pressure	0.3-0.7MPa
Flow direction	One-Way
Nominal frequency	1-60 times/minute
Exciting force	5.5-220 Newton. Metre
Maximum operating temperature	150℃

### Dimensions



Size							Parameter			
Model	A	B	C	D	E	F	Pressure MPa	Air consumption L/time	Impact ener gy(N.M)	Weight
SX30	9	67	82	135	1/4"	1/8"	0.3~0.7	0.05~0.13	5.5~13.1	1.1Kg
SX40	11	77	98	175	1/4"	1/8"	0.3~0.7	0.15~0.37	9.2~22.3	2.7Kg
SX60	12.5	110	143	220	1/4"	1/4"	0.3~0.7	0.33~0.77	20.6~49.0	6.0Kg
SX80	17	140	170	275	3/8"	3/8"	0.4~0.6	0.60~1.40	45.1~109.0	12.5Kg

Warning: Pneumatic vibrators can damage to device, if excessive vibration force, adjust to proper pressure.

### Valve

2P
2V
2W
2W(Big)
2WB
2WBF
US(2L)
DG223
DG523
0927/0955
PU220
PU225
VX
QX
PT
Q24J <sub>0</sub> H
K23J <sub>0</sub>
K25J <sub>0</sub>
K25J <sub>0</sub> H
K35J <sub>0</sub> H
K23JD
K25JD
K25JK
PV100
PV200
PV300
PV400
PV500
PV700
PV800
PV1527
PVN
MV100
MV200
NAA
GT
K
R
FAL
FP-M
NTP
<b>SX</b>