



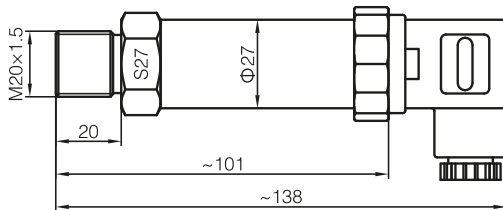
Product details

1. T1030 pressure transducer is a product which is characterized by high precision, high reliability, high cost-effectiveness and flexible range.
2. It is widely used in testing gas and liquid pressure, such as water, oil, light hazardous liquid and gas.

Features

1. Accuracy ± 0.25 , $\pm 0.5\%$ F.S;
2. Zero and full range can be adjusted;
3. One unit or non-standard order is acceptable;
4. Displayer is optional;
5. Digital compensation with whole range of temperature, various of pressure range and signal output;
6. Electrical connector and pressure connection;
7. Non-polarity two wired current output.

Dimensions



Ordering code

T1030		A4		1.0		M		0.25		H		G		1.0	
		Output		Measurement range		Unit of measure		Accuracy		Electrical connector		Pipe size		Cable length(m)	
		A4	4~20mA			K	kPa	0.25	±0.25%F.S			H	DIN43650-A	G	G1/4
		V0	0~5V			M	MPa					GX	GX16-7	N	NPT1/4
		V1	1~5V			P	psi					C	Cable	R	R1/4
		V10	0~10V			B	bar							U	7/16-20UNF
														M	M20×1.5
														N2	NPT1/2
														G2	G1/2
														R2	R1/2

Specifications

General	Value				
Measurement range	0~2...600bar				
Overload pressure	1.5 times of full scales				
Burst pressure	3 times of full scales				
Accuracy	±0.5%F.S				
Long term stability	Typical value: 0.25%F.S Maximum: 0.4%F.S				
Working temperature	-40℃~85℃				
Compensated temperature	-10℃~70℃				
Medium compatibility	ALL Corrosive medium compatible with 1Cr18Ni9Ti				
Output mode	Two-wire	Three-wire			Four-wire
Output	4~20mA	0~20mA/0~10VAC	0/1~5V	0.5~3/4.5V	0~20mA, 0~5/10VDC
Power supply	10~30VDC	11~30VDC	8~24VDC	5V Ratio	8/11~30VDC
Load resistance	(U-10)/0.02(Ω)	Current model: (U-12)/0.02(Ω); Voltage model: >20K(Ω)			
Insulation	>100M(Ω)@50V				
Electrical connection	DIN63650, IP65; GX16-7, IP45; Wire, IP68				
Pressure connection	G1, G1/4, G1/2, NPT1/4, NPT1/2, R1/4, M20×1.5, (Ht)				
Response time	10ms				
Electro magnetic compatibility	Electromagnetic transmit: EN50081-1/-2; Electromagnetic sensitivity: EN50082-2				

Conversion: 1bar=14.5psi, 1MPa=10bar

Pressure Switch

T1030

T1050

T1700

T1800

T2000W

PF08

PF08A

PF08V

PF20

PF20-V

PF25

PF26

PF37

PF701B

PF702

PF702A

PF702B

PF703A

PF704

PF704A

PF705

PF705A

PF705B

PF706

PF706A

PFDS10

PFDS63