



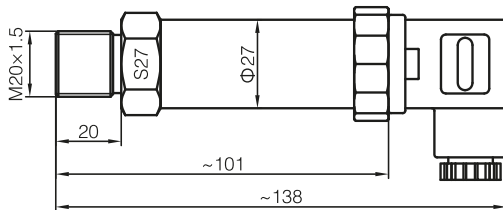
Product details

1. T1030 pressure transducer is a product which is characterized by high precision, high reliability, high cost-effectiveness and flexible range.
2. It is widely used in testing gas and liquid pressure, such as water, oil, light hazardous liquid and gas.

Features

1. Accuracy ± 0.25 , $\pm 0.5\%$ F.S;
2. Zero and full range can be adjusted;
3. One unit or non-standard order is acceptable;
4. Displayer is optional;
5. Digital compensation with whole range of temperature, various of pressure range and signal output;
6. Electrical connector and pressure connection;
7. Non-polarity two wired current output.

Dimensions



Ordering code

T1030		-	A4	-	1.0	-	M	-	0.25	-	H	-	G	-	1.0
			Output		Measurement range		Unit of measure		Accuracy		Electrical connector		Pipe size		Cable length(m)
		A4	4~20mA			K	kPa	0.25 ±0.25%F.S		H DIN43650-A		G G1/4			
		V0	0~5V			M	MPa			GX GX16-7		N NPT1/4			
		V1	1~5V			P	psi			C Cable		R R1/4			
		V10	0~10V			B	bar					U 7/16-20UNF			
												M M20×1.5			
												N2 NPT1/2			
												G2 G1/2			
												R2 R1/2			

Specifications

General	Value				
Measurement range	0~2...600bar				
Overload pressure	1.5 times of full scales				
Burst pressure	3 times of full scales				
Accuracy	±0.5%F.S				
Long term stability	Typical value: 0.25%F.S Maximum: 0.4%F.S				
Working temperature	-40℃~85℃				
Compensated temperature	-10℃~70℃				
Medium compatibility	ALL Corrosive medium compatible with 1Cr18Ni9Ti				
Output mode	Two-wire	Three-wire			Four-wire
Output	4~20mA	0~20mA/0~10VAC	0/1~5V	0.5~3/4.5V	0~20mA, 0~5/10VDC
Power supply	10~30VDC	11~30VDC	8~24VDC	5V Ratio	8/11~30VDC
Load resistance	(U-10)/0.02(Ω)	Current model: (U-12)/0.02(Ω); Voltage model: >20K(Ω)			
Insulation	>100M(Ω)@50V				
Electrical connection	DIN63650, IP65; GX16-7, IP45; Wire, IP68				
Pressure connection	G1, G1/4, G1/2, NPT1/4, NPT1/2, R1/4, M20×1.5, (Ht)				
Response time	10ms				
Electro magnetic compatibility	Electromagnetic transmit: EN50081-1/-2; Electromagnetic sensitivity: EN50082-2				

Conversion: 1bar=14.5psi, 1MPa=10bar

Pressure Switch

T1030

T1050

T1700

T1800

T2000W

PF08

PF08A

PF08V

PF20

PF20-V

PF25

PF26

PF37

PF701B

PF702

PF702A

PF702B

PF703A

PF704

PF704A

PF705

PF705A

PF705B

PF706

PF706A

PFDS10

PFDS63

Pressure
Switch

T1030

T1050

T1700

T1800

T2000W

PF08

PF08A

PF08V

PF20

PF20-V

PF25

PF26

PF37

PF701B

PF702

PF702A

PF702B

PF703A

PF704

PF704A

PF705

PF705A

PF705B

PF706

PF706A

PFDS10

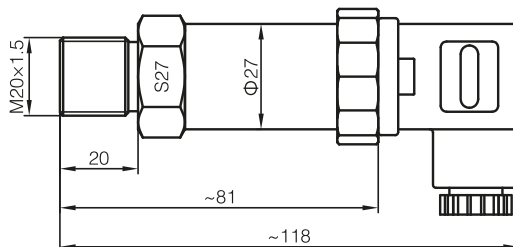
PFDS63



Product details

1. T1050 series are the cost effective products featuring mass production, low cost, extensive application for industrial and civil product.
2. It's widely used for measuring the pressure of gas and liquid, such as water, oil and mild corrosive liquid and gas.
3. The product is made of 1Cr18Ni9Ti stainless steel and with selected pressure sensing elements which is from well-known international brand.
4. The special circuits for V/I adaptor makes the zero and full range calibration more convenient.
5. Non-polar two-wire current and three-wire AC/DC voltage output are provided.
6. Customized structures and output formats can be designed according to special application requirements, in addition to standards products.

Dimensions



Ordering code

T1050 - A4 - 1.0 - M - 0.25 - H - G - 1.0

Output	
A4	4~20mA
V05	0.5~4.5V
V0	0~5V
V1	1~5V
V10	0~10V

Measurement
range

Unit of measure	
K	kPa
M	MPa
P	psi
B	bar

Accuracy	
0.25	±0.25%F.S
0.5	±0.5%F.S

Electrical connector	
H	DIN43650-A
GX	GX16-7
C	Cable

Pipe size	
G	G1/4
N	NPT1/4
R	R1/4
U	7/16-20UNF
M	M20×1.5
N2	NPT1/2
G2	G1/2
R2	R1/2

Cable
length(m)

Specifications

General	Value			
Measurement range	0~2...600bar			
Overload pressure	1.5 times of full scales			
Burst pressure	3 times of full scales			
Accuracy	±0.5%F.S			
Long term stability	Typical value: 0.25%F.S Maximum: 0.4%F.S			
Working temperature	-40℃~85℃			
Compensated temperature	-10℃~70℃			
Medium compatibility	ALL Corrosive medium compatible with 1Cr18Ni9Ti			
Output mode	Two-wire	Three-wire		
Output	4~20mA	0.5~4.5V	0/1~5V	0~10V
Power supply	12~30VDC	5VDC	10~30VDC/AC	12~30VDC/AC
Load resistance	(U-10)/0.02(Ω)	>100K(Ω)		
Insulation	>100M(Ω)@50V			
Electrical connection	Packard, DIN 43650C, DIN72585, M12, Cable			
Pressure connection	Male G1/4, G1/2, NPT1/4, NPT1/2, M20×1.5			
Response time	10ms			
Pressure form	Gauge pressure			
Electro magnetic compatibility	Electromagnetic transmit: EN50081-1/-2; Electromagnetic sensitivity: EN50082-2			

Conversion: 1bar=14.5psi, 1MPa=10bar



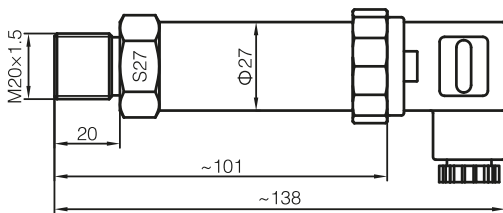
Product details

1. T1700 series pressure transmitter is used for absolute vacuum measuring control, which has fully solved the problem of difficult vacuum measurement.
2. All the existing pressure connections and electrical connections are available for T1700 series pressure transmitter.

Features

1. Optional accuracy: $\pm 0.25\%F.S$, $\pm 0.5\%F.S$
2. Can be customized with the brand for OEM use
3. Acceptable for MOQ from one unit
4. Flexible pressure ranges and output options
5. No-polar two-wire current output
6. AC/DC voltage output

Dimensions



Applications

Atmospheric measurement, Aerospace and nautical field, Packing machinery, Petro-chemical, Meteorology monitoring, Automatic inspection system, Air pressure test in the mine ventilation system, high buildings management

Ordering code

T1700 - A4		- 1.0		- M		- 0.25		- H		- G		- 1.0	
Output		Measurement range		Unit of measure		Accuracy		Electrical connector		Pipe size		Cable length(m)	
A4	4~20mA			K	kPa	0.25	$\pm 0.25\%F.S$	H	DIN43650-A	G	G1/4		
V0	0~5V			M	MPa			GX	GX16-7	N	NPT1/4		
V1	1~5V			P	psi			C	Cable	R	R1/4		
V10	0~10V			B	bar					U	7/16-20UNF		
										M	M20x1.5		
										N2	NPT1/2		
										G2	G1/2		
										R2	R1/2		

Specifications

General	Value		
Measurement range	Absolute pressure 0.1.....400bar		
Overload pressure	1.5 times of full scales		
Burst pressure	3 times of full scales		
Accuracy	±0.25%F.S, ±0.5%F.S		
Stable	Typically: 0.25%F.S Max: 0.4%F.S		
Medium temperature range	-40℃~85℃ (-40℃~125℃ is available on request)		
Compensated temperature	-10℃~70℃		
Medium	Compatible with stainless steel 1Cr18Ni9Ti		
Electrical overview	2 wire	3 wire	
Output	4~20mA	0~5V	0~10V
Power supply	10~30VDC	6~24VDC/10~36VAC	11~30VDC/20~36VAC
Load	(U-10)/0.02(Ω)	>100K(Ω)	
Insulation reistance	>100M(Ω)@50V		
Electrical connection	DIN43650, Protecting class IP65		
	GX16-7, Protecting class IP45		
	Waterproof wire lead (Class 5), Protecting class IP68		
Pressure connection	M20×1.5, G1/2, G1/4, NPT1/4, NPT1/2		
Response time	10ms		
Electro magnetic compatibility	EN50081-1/-2; EN50082-2		

Conversion: 1bar=14.5psi, 1MPa=10bar

Pressure Switch

T1030

T1050

T1700

T1800

T2000W

PF08

PF08A

PF08V

PF20

PF20-V

PF25

PF26

PF37

PF701B

PF702

PF702A

PF702B

PF703A

PF704

PF704A

PF705

PF705A

PF705B

PF706

PF706A

PFDS10

PFDS63

Pressure Switch

T1030
T1050
T1700
T1800
T2000W
PF08
PF08A
PF08V
PF20
PF20-V
PF25
PF26
PF37
PF701B
PF702
PF702A
PF702B
PF703A
PF704
PF704A
PF705
PF705A
PF705B
PF706
PF706A
PFDS10
PFDS63



Product details

1. T1800 high temperature spray-diaphragm pressure transmitter is a product which is characterized by high temperature-proof, wide range and high accuracy.
2. It is widely used in testing gas and liquid pressure, such as water, oil, light hazardous liquid and gas.
3. Spray-diaphragm core refers to spray an insulation layer on the core by chemical method.
4. Then wheatstone bridge of metal diaphragm type and temperature compensation are sprayed on the insulated body.
5. At last, cover a layer of insulation material on the metal diaphragm resistance.
6. The wheatstone bridge of metal diaphragm will deform in accordance with the core deformation, which is affected by pressure and give a linear output.

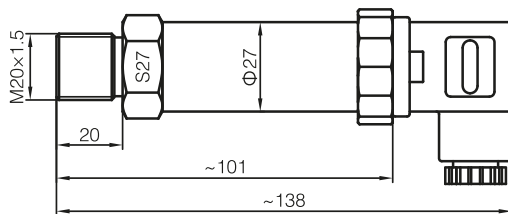
Features

1. ± 0.1 , ± 0.25 , $\pm 0.5\%$ F.S accuracy
2. Spray-diaphragm core
3. 150°C proof- temperature
4. Entirely welding without O-ring
5. Various connector and pressure connection
6. Non-polar two wire system currency output

Applications

Engineering plant, motor engine, high pressure common rail engine, high and low temperature environment, deep well oil pressure measure, boiler pressure checking, natural gas storage equipment and hydraulic lubrication.

Dimensions



Ordering code

T1800	- A4	- 100	- K	- 0.25	- H	- GF	- 1.0
	Output	Measurement range	Unit of measure	Accuracy	Electrical connector	Pipe size	Cable length(m)
	A4 4~20mA		K kPa	0.25 $\pm 0.25\%$ F.S	H DIN43650-A	GF G1/4	
	V0 0~5V		M MPa	0.5 $\pm 0.5\%$ F.S	GX GX16-7	GM G1/4 male screw	
	V1 1~5V		P psi		C Cable	M M20x1.5	
	V10 0~10V		B bar		CW Waterproof joint qualification	RG $\Phi 8$ air faucet	

Specifications

General	Value		
Measurement range	0~1.....2000bar		
Overload capability	2 times of full scales		
Burst pressure	4 times of full scales		
Accuracy	$\pm 0.1\%$ F.S, $\pm 0.25\%$ F.S, $\pm 0.5\%$ F.S		
Stable	Typically: 0.25%F.S per year, 0.4%F.S(Max) per year		
Medium temperature range	-50°C~150°C (-50°C~230°C is available on request)		
Compensated temperature	-20°C~120°C		
Medium	Liquid and gas, compatible with stainless steel 1Cr18Ni9Ti		
Electrical overview	2 wire	3 wire	4 wire
Output	4~20mA	0~20mA 0~10mA	0~5/10V
Power supply	12~30VDC	12~30VDC	12~30VDC
Load	(U-10)/0.02(Ω)	(U-10)/0.02(Ω)	>20K(Ω)
Insulation resistance	>100M(Ω)@50V		
Insulation voltage	500V@60 second		
Vibration / Constant shock	10g/5~2000Hz, axes X/Y/Z 20g sine 11ms		
Life	2x10 ⁶ cycles @25°C		
Electrical connection	DIN43650C, M12 Series, Packard, Cable		
Pressure connection	M20x1.5, G1/4, G1/2, R1/2, NPT1/2, NPT1/4		
Pressure type	Gauge, Seal gauge, Absolute		
Electro magnetic compatibility	EN50081-1/-2, EN50082-2		

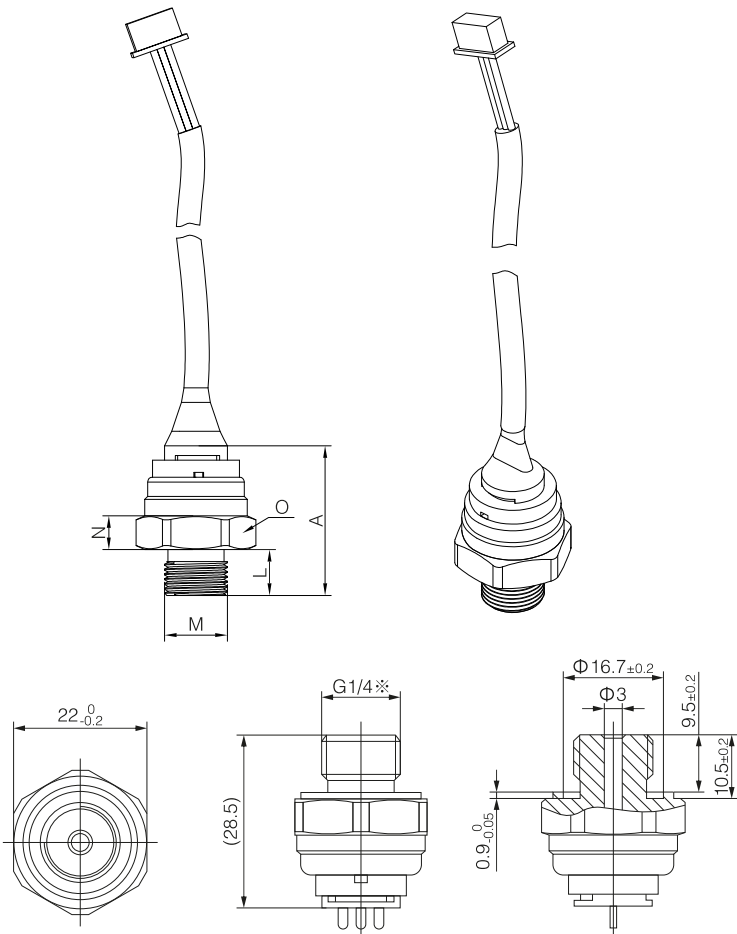
Conversion: 1bar=14.5psi, 1MPa=10bar

Product details

- 1. T2000W pressure transmitter is specially designed for constant pressure frequency water supply system.
- 2. With stainless steel housing, buffer screw and anti water hammer, it can be used in the water supply system for pressure sensing, signal receiving, and feedback.
- 3. T2000W is a high demand, cost effective product for civil use.



Dimensions



Specifications

General	Value
Measure range	0.....10bar
Accuracy	±1.0%F.S
Output mode	Three-wire
Output	0.5~4.5V
Power supply	5VDC
Insulation	>100M(Ω)@50V
Electrical connection	Packard, with wire leads
Protection grade	IP67
Pressure connection	G1/4, G3/8

Conversion: 1kgf/cm²=14.2psi 1bar=14.5psi

Pressure
Switch

T1030

T1050

T1700

T1800

T2000W

PF08

PF08A

PF08V

PF20

PF20-V

PF25

PF26

PF37

PF701B

PF702

PF702A

PF702B

PF703A

PF704

PF704A

PF705

PF705A

PF705B

PF706

PF706A

PFDS10

PFDS63