



AD402-S

Range of application

This product often be applied to remove the water at the lower-place of piping, frozen type air drying machine, oil separator, air drying tanks and the bottom of various air filters. It can be installed in the place inconvenient for manual dis-charge. such as higher, lower and narrow places, especially there's large consumption of air. It can prevent the compressed air being re-polluted by condense water resulted from neglect of manual drain.

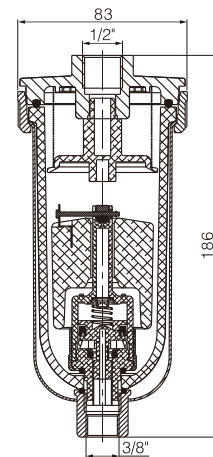
Product feature

Automatic drain; Air shut off drain.

Points for attention

When using, the drainer should be installed vertically and the drain port facing down.

Dimensions



Specification

Model	AD402-S-02	AD402-S-03	AD402-S-04
Ensured pressure	1.5MPa		
Operating pressure	0.3-0.8MPa		
Ambient and fluid temperature	5-60℃		
Port size	1/4"	3/8"	1/2"
Drain size	3/8"		
Drain status	Normal open type		
Working medium	Compressed air		



AD402-X

Range of application

This product often be applied to remove the water at the lower-place of piping, frozen type air drying machine, oil separator, air drying tanks and the bottom of various air filters. It can be installed in the place inconvenient for manual dis-charge. such as higher, lower and narrow places, especially there's large consumption of air. It can prevent the compressed air being re-polluted by condense water resulted from neglect of manual drain.

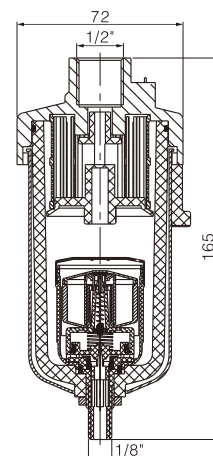
Product feature

Automatic drain; Air shut off drain.

Points for attention

When using, the drainer should be installed vertically and the drain port facing down.

Dimensions



Specification

Model	AD402-X-02	AD402-X-03	AD402-X-04
Ensured pressure resistance	1.5MPa		
Operating pressure	0.2-0.8MPa		
Ambient and fluid temperature	5-60℃		
Port size	1/4"	3/8"	1/2"
Drain size	3/8"		
Drain status	Normal open type		
Working medium	Compressed air		

FRL

AC/BC

AFC/BFC

AFR/BFR

AF/BF

AR/BR

AL/BL

SR

SDR

AC

AW

AF

AR

AL

F3

F2

F1

F

R

L

USFRL

USFR/L

USFR

USF

USR

USL

QSL

QTY

QIU

QTYH

QSLH

QFRH

AFF

AF(Big)

AL(Big)

AR(Big)

AD402

AH402

AD-5

IR

ITV

ACR

F804

PG

FRL
AC/BC
AFC/BFC
AFR/BFR
AF/BF
AR/BR
AL/BL
SR
SDR
AC
AW
AF
AR
AL
F3
F2
F1
F
R
L



Range of application

This product is a drainage device belongs to high voltage air system, work for the whole pipeline system, commonly used in the inconvenient place for manual drainage on the high frequency equipment, such as the lower part of pipe, refrigerated air dryer, water tank and so on.

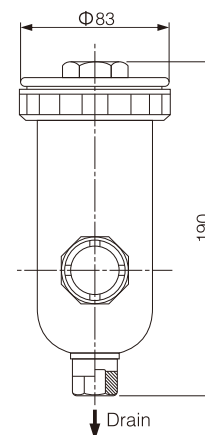
Product feature

Automatic drain;
metal cup is equipped with a visual window.

Points for attention

When using, the drainer should be installed vertically and the drain port facing down.

Dimensions



Specification

Model	AH402-02	AH402-03	AH402-04
Ensured pressure resistance	2.5MPa		
Operating pressure	0.15-2.0MPa		
Ambient and fluid temperature	5-60℃		
Port size	1/4"	3/8"	1/2"
Drain size	1/8"	1/4"	3/8"
Drain status	Normal open type		
Working medium	Compressed air		

Note: PT thread, G thread and NPT thread are available.

AD-5 Series End Automatic Drainer

USFRL
USFR/L
USFR
USF
USR
USL
QSL
QTY
QTYH
QSLH
QFRH
AFF
AF(Big)
AL(Big)
AR(Big)
AD402
AH402
AD-5
IR
ITV
ACR
F804
PG



Range of application

This product often applies to remove the water at the lower places of piping, frozen type air drying machine, oil separator, air drying tanks and the bottom of various air filters. It can be installed in the places where inconvenient for manual discharge. Such as higher, lower and narrow places, especially there's large consumption of air. It can prevent the compressed air being re-polluted by condensate water resulted by neglect of manual drain.

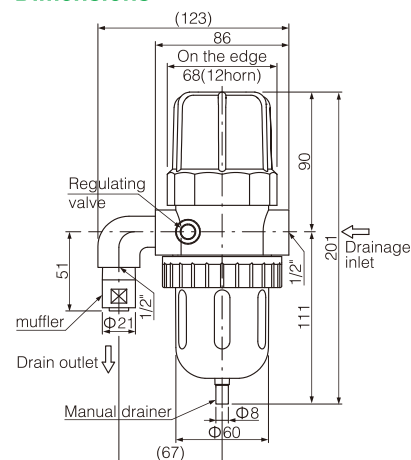
Product feature

High reliable drainage system; Automatic drain;
The water cup is provided with metal protective cover.

Points for attention

When using, the drainer should be installed vertically and the drain port facing down.

Dimensions



Specification

Model	AD-5
Ensured pressure	1.5MPa
Operating pressure	0.29-0.98MPa
Ambient and fluid temperature	2-60℃
Port size	1/2"
Drain size	1/2"
Drain status	Normal open type
Working medium	Compressed air

Note: PT thread, G thread and NPT thread are available.