



ADV-AC-GW10

ADV-AC-GW10  
(Include water cup)

Note: This machine is applicable for  
Filter AIRTAC: AF2000.

### Ordering code

ADV		AC		GW10	
Model		Machine type		Drain principle	
ADV	Automatic drain valve	AC	AC Series	G	Lever type
				W	Outer thread
				10	The numbers means water drain outlet's diameter

### Range of application

This product is installed at the bottom of water cups which are automatic driers, air filters and air filter regulators and it can auto discharge the condense water gathered in the water cup.

### Technical requirements

Working medium: Compressed air; Ambient and media temperature: 5-60°C;  
Operating pressure: 0.2-0.8MPa.

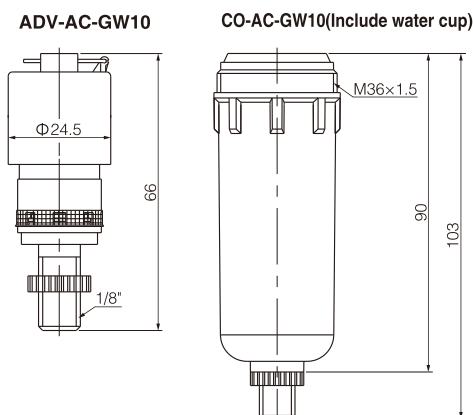
### Product feature

Automatic drain; Air shut off drain.

### Points for attention

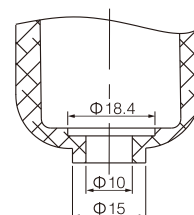
When using, the drainer should be installed vertically and the drain port facing down.

### Dimensions



Dimensional drawing of water cup  
connecting part

ADV-AC-GW10



## ADV-BC Series Automatic Drain Valve (AIRTAC Type)



ADV-BC-FK15.5

Note: This machine is applicable for Airtac Af4000,  
and can be instead of AD400.

### Ordering code

ADV		BC		FK15.5	
Model		Machine type		Drain principle	
ADV	Automatic drain valve	BC	BC Series	F	Floating ball type
				K	Quick connector
				15.5	The numbers means water drain outlet's diameter

### Range of application

This product is installed at the bottom of water cups which are automatic driers, air filters and air filter regulators and it can automatic discharge the condense water gathered in the water cup.

### Technical requirements

Working medium: Compressed air; Ambient and media temperature: 5-60°C;  
Operating pressure: 0.2-0.8MPa.

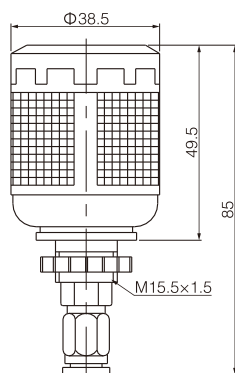
### Product feature

Manual drain; Automatic drain; Air shut off drain.

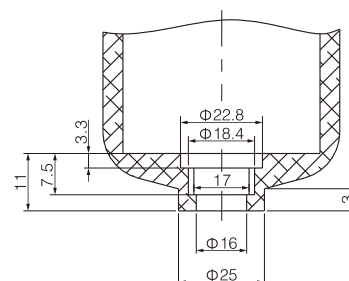
### Points for attention

When using, the drainer should be installed vertically and the drain port facing down.

### Dimensions



Dimensional drawing of water cup  
connecting part





ADV-BC1-FW16

ADV-BC1-FN15.5

Note: This machine is applicable for  
Filter AIRTAC: AF4000.

### Ordering code

ADV	BC1	FW16/FN15.5
<b>Model</b>	<b>Machine type</b>	
ADV	BC1 BC1 SERIES	
<b>Drain principle</b>		
F	Floating ball type	
W	Outer thread	
N	Inner thread	
16/15.5	The numbers means water drain outlet's diameter	

### Range of application

This product is installed at the bottom of water cups which are automatic drianers, air filters and air filter regulators and it can auto discharge the condense water gathered in the water cup.

### Technical requirements

Working medium: Compressed air; Ambient and media temperature: 5-60°C;  
Operating pressure: 0.2-0.8MPa.

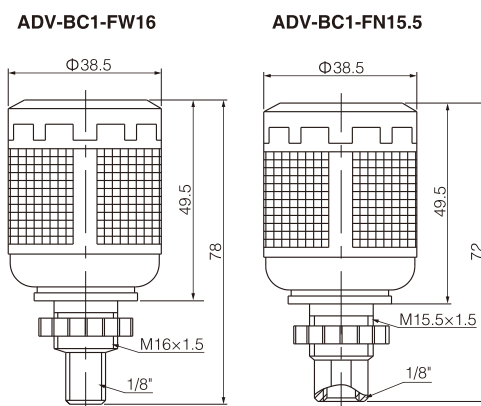
### Product feature

Automatic drain; Air Shut off Drain; Manual Drain.

### Points for attention

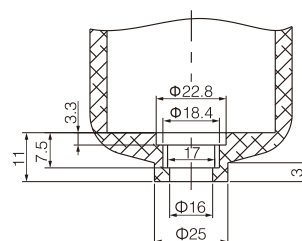
When using, the drainer should be installed vertically and the drain port facing down.

### Dimensions



Dimensional drawing of water cup  
connecting part

ADV-BC1-FW16/ADV-BC1-FN15.5



## ADV-BC2 Series Automatic Drain Valve (AIRTAC Type)



ADV-BC2-GW16

ADV-BC2-GN15.5

Note: This machine is applicable for  
Filter AIRTAC: AF4000.

### Ordering code

ADV	BC2	GW16/GN15.5
<b>Model</b>	<b>Machine type</b>	
ADV	BC2 BC2 Series	
<b>Drain principle</b>		
G	Lever type	
W	Outer thread	
N	Inner thread	
16/15.5	The numbers means water drain outlet's diameter	

### Range of application

This product is installed at the bottom of water cups which are automatic drianers, air filters and air filter regulators and it can auto discharge the condense water gathered in the water cup.

### Technical requirements

Working medium: Compressed air; Ambient and media temperature: 5-60°C;  
Operating pressure: 0.2-0.8MPa.

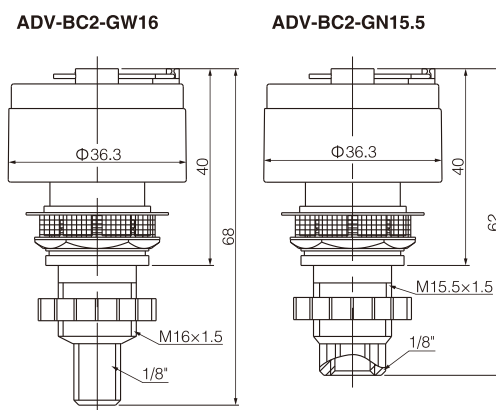
### Product feature

Automatic drain; Air shut off drain.

### Points for attention

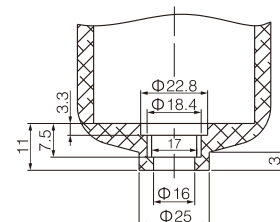
When using, the drainer should be installed vertically and the drain port facing down.

### Dimensions



Dimensional drawing of water cup  
connecting part

ADV-BC2-GW16/ADV-BC2-GN15.5





ADV-YDK-GN12

ADV-YDK-GN16

Note: This machine is applicable for  
Filter AIRTAC: GF300/400.

### Ordering code

ADV		YDK		GN12/16
Model		Machine type		Drain principle
ADV	Automatic drain valve	YDK	YDK Series	
		G	Lever type	
		N	Inner thread	
		12/16	The numbers means water drain outlet's diameter	

### Range of application

This product is installed at the bottom of water cups which are automatic driers, air filters and air filter regulators and it can automatic discharge the condense water gathered in the water cup.

### Technical requirements

Working medium: Compressed air; Ambient and media temperature: 5-60°C;  
Operating pressure: 0.2-0.8MPa.

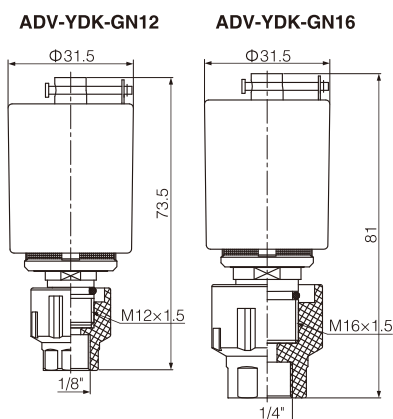
### Product feature

Automatic drain; Air shut off drain.

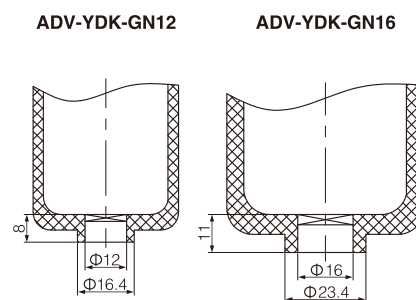
### Points for attention

When using, the drainer should be installed vertically and the drain port facing down.

### Dimensions



Dimensional drawing of water cup conneting part



## ADV-200 Series Automatic Drain Valve (SMC Type)



ADV-200-GW10

ADV-200-GW10  
(Include water cup)

Note: This machine is applicable for  
Filter SMC: AF2000.

### Ordering code

ADV		200		GW10
Model		Machine type		Drain principle
ADV	Automatic drain valve	200	200 Series	
		G	Lever type	
		W	Outer thread	
		10	The numbers means water drain outlet's diameter	

### Range of application

This product is installed at the bottom of water cups which are automatic driers, air filters and air filter regulators and it can auto discharge the condense water gathered in the water cup.

### Technical requirements

Working medium: Compressed air; Ambient and media temperature: 5-60°C;  
Operating pressure: 0.2-0.8MPa.

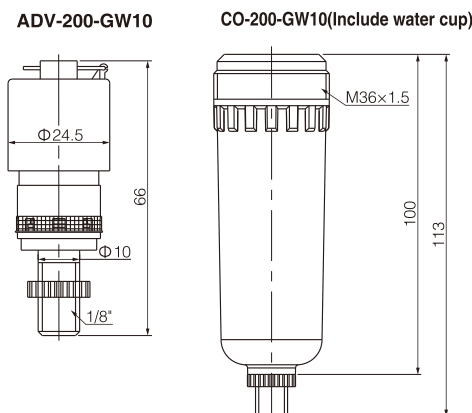
### Product feature

Automatic drain; Air shut off drain.

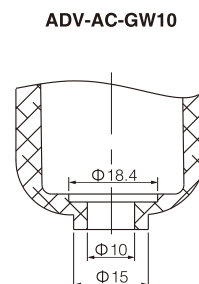
### Points for attention

When using, the drainer should be installed vertically and the drain port facing down.

### Dimensions



Dimensional drawing of water cup conneting part





ADV-300-GW12/14

ADV-300-GN12

Note: This machine is applicable for  
Filter SMC: AF3000.

### Ordering code

<b>ADV</b>	<b>300</b>	<b>GW12/14;GN12</b>
<b>Model</b>	<b>Machine type</b>	
ADV	300	300 Series
<b>Drain principle</b>		
G	Lever type	
W	Outer thread	
N	Inner thread	
12/14	The numbers means water drain outlet's diameter	

### Range of application

This product is installed at the bottom of water cups which are automatic drianers, air filters and air filter regulators and it can auto discharge the condense water gathered in the water cup.

### Technical requirements

Working medium: Compressed air; Ambient and media temperature: 5-60°C;  
Operating pressure: 0.2-0.8MPa.

### Product feature

Automatic drain; Air Shut off Drain.

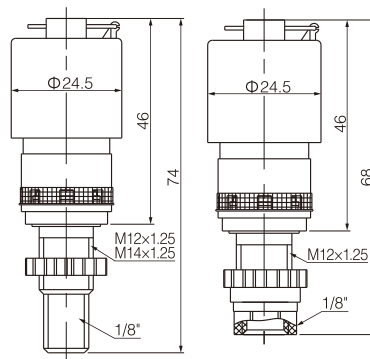
### Points for attention

When using, the drainer should be installed vertically and the drain port facing down.

### Dimensions

ADV-300-GW12/14

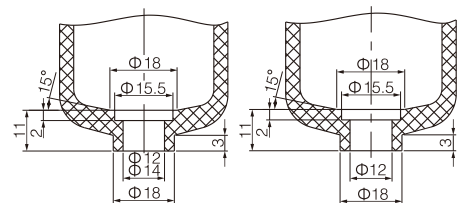
ADV-300-GN12



Dimensional drawing of water cup conneting part

ADV-300-GW12/14

ADV-300-GN12



## ADV-302 Series Automatic Drain Valve (SMC Type)



ADV-302-GW12/14/15.5

ADV-302-GN12/14

Note: This machine is applicable for  
Filter SMC: AF3000.

### Ordering code

<b>ADV</b>	<b>302</b>	<b>GW12/14/15.5;GN12</b>
<b>Model</b>	<b>Machine type</b>	
ADV	302	302 Series
<b>Drain principle</b>		
G	Lever type	
W	Outer thread	
N	Inner thread	
12/14/15.5	The numbers means water drain outlet's diameter	

### Range of application

This product is installed at the bottom of water cups which are automatic drianers, air filters and air filter regulators and it can auto discharge the condense water gathered in the water cup.

### Technical requirements

Working medium: Compressed air; Ambient and media temperature: 5-60°C;  
Operating pressure: 0.2-0.8MPa.

### Product feature

Automatic drain; Air shut off drain.

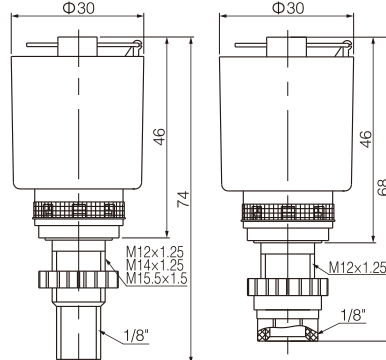
### Points for attention

When using, the drainer should be installed vertically and the drain port facing down.

### Dimensions

ADV-302-GW12

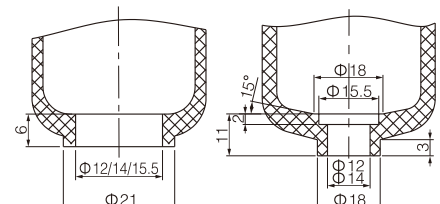
ADV-302-GN12/14



Dimensional drawing of water cup conneting part

ADV-302-GW12/14/15.5

ADV-302-GN12/14







ADV-302-GK18



ADV-302-GN18

Note: This machine is applicable for  
SMC: AD302 (End Automatic drain valve).

### Ordering code

ADV	302	GN18/GK18
<b>Model</b>	<b>Machine type</b>	
ADV	302   302 Series	
<b>Drain principle</b>		
G	Lever type	
N	Inner thread	
K	Quick connector	
18	The numbers means water drain outlet's diameter	

### Range of application

This product is installed at the bottom of water cups which are automatic drianers, air filters and air filter regulators and it can auto discharge the condense water gathered in the water cup.

### Technical requirements

Working medium: Compressed air; Ambient and media temperature: 5-60°C;  
Operating pressure: 0.2-0.8MPa.

### Product feature

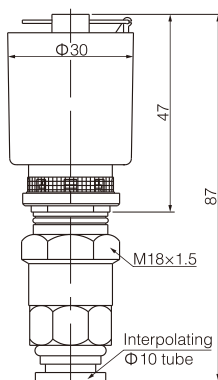
Automatic drain; Air shut off drain.

### Points for attention

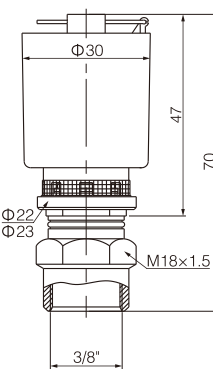
When using, the drainer should be installed vertically and the drain port facing down.

### Dimensions

ADV-302-GK18

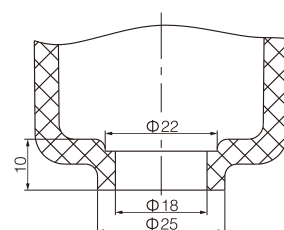


ADV-302-GN18



Dimensional drawing of water cup  
conneting part

ADV-302-GK18/ADV-302-GN18



## ADV-400 Series Automatic Drain Valve (SMC Type)

### Range of application

This product is installed at the bottom of water cups which are automatic drianers, air filters and air filter regulators and it can auto discharge the condense water gathered in the water cup.

### Technical requirements

Working medium: Compressed air; Ambient and media temperature: 5-60°C;  
Operating pressure: 0.2-0.8MPa.

### Product feature

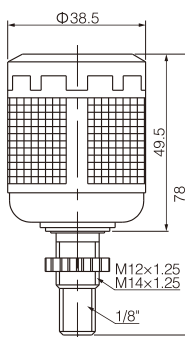
Automatic drain; Air Shut off Drain; Manual Drain.

### Points for attention

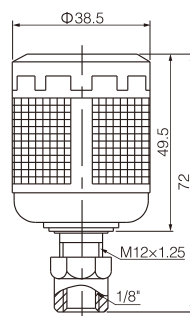
When using, the drainer should be installed vertically and the drain port facing down.

### Dimensions

ADV-400-FW12/14



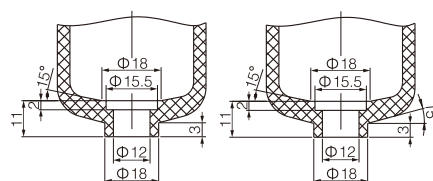
ADV-400-FN12



Dimensional drawing of water cup conneting part

ADV-400-FW12/14

ADV-400-FN12



ADV-400-FW12/14



ADV-400-FN12

Note: This machine is applicable for Filter SMC: AF4000/  
AF5000, SHAKO AF4000 and SHSNS AF4000.

### Ordering code

ADV	400	FW12/14;FN12
<b>Model</b>	<b>Machine type</b>	
ADV	400   400 Series	
<b>Drain principle</b>		
F	Floating ball type	
W	Outer thread	
N	Inner thread	
12/14	The numbers means water drain outlet's diameter	



ADV-400-GW12/14

ADV-400-GN12

Note: This machine is applicable for  
Filter SMC: AF4000/AF5000.

### Ordering code

<b>ADV</b>	<b>400</b>	<b>GW12/14;GN12</b>
<b>Model</b>	<b>Machine type</b>	
ADV	400	400 Series
<b>Drain principle</b>		
G	Lever type	
W	Outer thread	
N	Inner thread	
12/14	The numbers means water drain outlet's diameter	

### Range of application

This product is installed at the bottom of water cups which are automatic drianers, air filters and air filter regulators and it can auto discharge the condense water gathered in the water cup.

### Technical requirements

Working medium: Compressed air; Ambient and media temperature: 5-60°C;  
Operating pressure: 0.2-0.8MPa.

### Product feature

Automatic drain; Air Shut off Drain.

### Points for attention

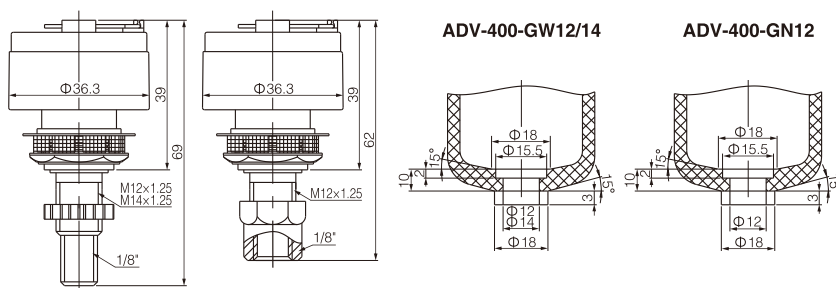
When using, the drainer should be installed vertically and the drain port facing down.

### Dimensions

ADV-400-GW12/14

ADV-400-GN12

Dimensional drawing of water cup conneting part



## ADV-402 Series Automatic Drain Valve (SMC Type)



ADV-402-GK18

ADV-402-GN18

Note: This machine is applicable for  
SMC: AD402 (End Automatic drain valve).

### Ordering code

<b>ADV</b>	<b>402</b>	<b>GN18/GK18</b>
<b>Model</b>	<b>Machine type</b>	
ADV	402	402 Series
<b>Drain principle</b>		
G	Lever type	
N	Inner thread	
K	Quick connector	
18	The numbers means water drain outlet's diameter	

### Range of application

This product is installed at the bottom of water cups which are automatic drianers, air filters and air filter regulators and it can auto discharge the condense water gathered in the water cup.

### Technical requirements

Working medium: Compressed air; Ambient and media temperature: 5-60°C;  
Operating pressure: 0.2-0.8MPa.

### Product feature

Automatic drain; Air shut off drain.

### Points for attention

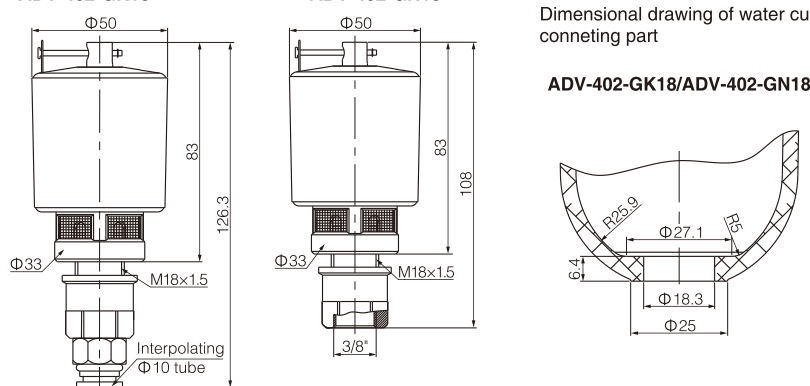
When using, the drainer should be installed vertically and the drain port facing down.

### Dimensions

ADV-402-GK18

ADV-402-GN18

Dimensional drawing of water cup conneting part





ADV-FST1-GW12

ADV-FST1-GW14

Note: This machine is applicable for Filter FESTO MINI Type.

### Ordering code

ADV	FST1	GW12/14
<b>Model</b>	<b>Machine type</b>	
ADV Automatic drain valve	FST1 FST1 Series	
<b>Drain principle</b>		
G	Lever type	
W	Outer thread	
12/14	The numbers means water drain outlet's diameter	

### Range of application

This product is installed at the bottom of water cups which are automatic drianers, air filters and air filter regulators and it can auto discharge the condense water gathered in the water cup.

### Technical requirements

Working medium: Compressed air; Ambient and media temperature: 5-60°C;  
Operating pressure: 0.2-0.8MPa.

### Product feature

Automatic drain; Air shut off drain.

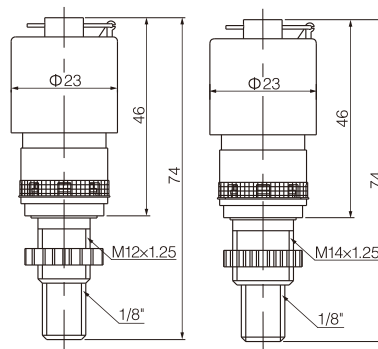
### Points for attention

When using, the drainer should be installed vertically and the drain port facing down.

### Dimensions

ADV-FST1-GW12

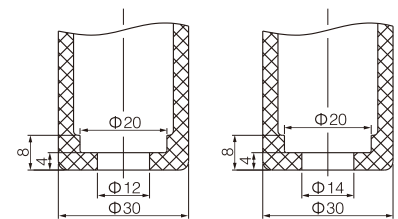
ADV-FST1-GW14



Dimensional drawing of water cup conneting part

ADV-FST1-GW12

ADV-FST1-GW14



## ADV-FST2 Series Automatic Drain Valve (FESTO Type)



ADV-FST2-GW15.5

ADV-FST2-GN15.5

Note: This machine is applicable for Filter FESTO MIDI MAXI Type.

### Ordering code

ADV	FST2	GW15.5/GN15.5
<b>Model</b>	<b>Machine type</b>	
ADV Automatic drain valve	FST2 FST2 Series	
<b>Drain principle</b>		
G	Lever type	
W	Outer thread	
N	Inner thread	
15.5	The numbers means water drain outlet's diameter	

### Range of application

This product is installed at the bottom of water cups which are automatic drianers, air filters and air filter regulators and it can auto discharge the condense water gathered in the water cup.

### Technical requirements

Working medium: Compressed air; Ambient and media temperature: 5-60°C;  
Operating pressure: 0.2-0.8MPa.

### Product feature

Automatic drain; Air shut off drain.

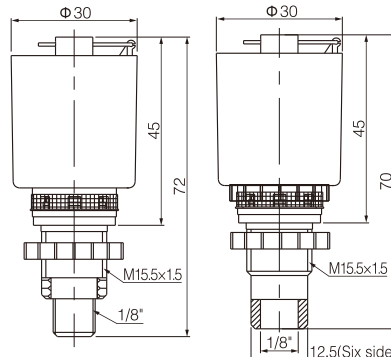
### Points for attention

When using, the drainer should be installed vertically and the drain port facing down.

### Dimensions

ADV-FST2-GW15.5

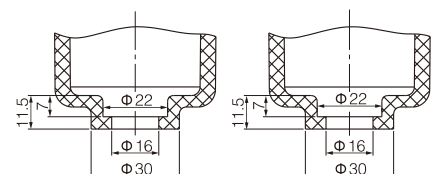
ADV-FST2-GN15.5



Dimensional drawing of water cup conneting part

ADV-FST2-GW15.5

ADV-FST2-GN15.5





ADV-XG-GW12/14

Note: This machine is applicable for Filter SHAKO, SHSNS AF4000.

### Ordering code

ADV		XG		GW12/14	
Model		Machine type		Drain principle	
ADV	Automatic drain valve	XG	XG Series	G	Lever type
				W	Outer thread
				12/14	The numbers means water drain outlet's diameter

### Range of application

This product is installed at the bottom of water cups which are automatic driers, air filters and air filter regulators and it can auto discharge the condense water gathered in the water cup.

### Technical requirements

Working medium: Compressed air; Ambient and media temperature: 5-60°C;  
Operating pressure: 0.2-0.8MPa.

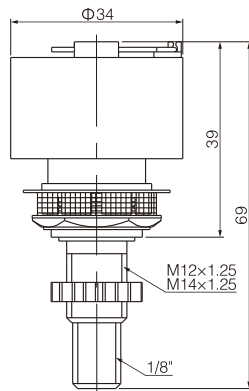
### Product feature

Automatic drain; Air shut off drain.

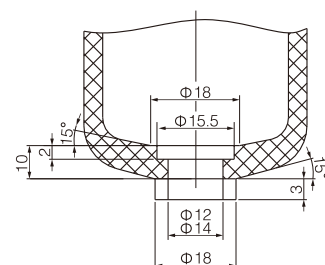
### Points for attention

When using, the drainer should be installed vertically and the drain port facing down.

### Dimensions



Dimensional drawing of water cup conneting part



## ADV-NG Series Automatic Drain Valve (NORGREN Type)



ADV-NG-GW16

Note: This machine is applicable for Filter NORGREN AF2000.

### Ordering code

ADV		NG		GW16	
Model		Machine type		Drain principle	
ADV	Automatic drain valve	NG	NG Series	G	Lever type
				W	Outer thread
				16	The numbers means water drain outlet's diameter

### Range of application

This product is installed at the bottom of water cups which are automatic driers, air filters and air filter regulators and it can auto discharge the condense water gathered in the water cup.

### Technical requirements

Working medium: Compressed air; Ambient and media temperature: 5-60°C;  
Operating pressure: 0.2-0.8MPa.

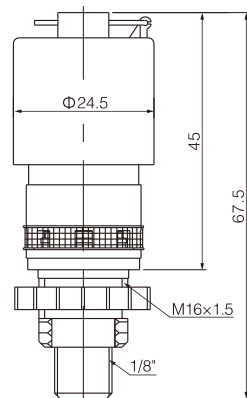
### Product feature

Automatic drain; Air shut off drain.

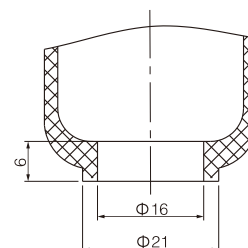
### Points for attention

When using, the drainer should be installed vertically and the drain port facing down.

### Dimensions



Dimensional drawing of water cup conneting part





ADV-ATLS-G17

ADV-ATLS-G20

Note: This machine is applicable for Filter ATLASCOPO.

### Ordering code

ADV	ATLS	G17/20
<b>Model</b>	<b>Machine type</b>	
ADV Automatic drain valve	ATLS ATLS Series	
<b>Drain principle</b>		
G	Lever type	
W	Outer thread	
17/20	The numbers means water drain outlet's diameter	

### Range of application

This product is installed at the bottom of water cups which are automatic drianers, air filters and air filter regulators and it can auto discharge the condense water gathered in the water cup.

### Technical requirements

Working medium: Compressed air; Ambient and media temperature: 5-60°C;  
Operating pressure: 0.2-0.8MPa.

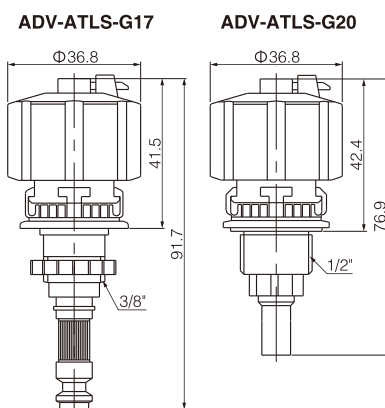
### Product feature

Automatic drain; Air shut off drain.

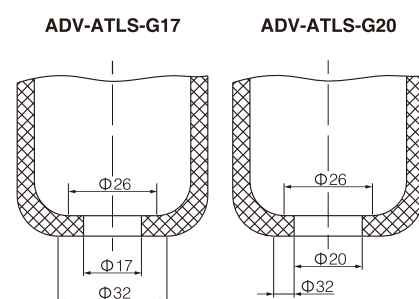
### Points for attention

When using, the drainer should be installed vertically and the drain port facing down.

### Dimensions



Dimensional drawing of water cup conneting part



## ADV-ASCO/MA Series Automatic Drain Valve (ASCO/MINDMAN Type)



ADV-ASCO-GW10

ADV-MA-G14

Note: This machine is applicable for Filter ASCO.

Note: This machine is applicable for Filter MINDMAN.

### Ordering code

ADV	ASCO/MA	GW10/G14
<b>Model</b>	<b>Machine type</b>	
ADV Automatic drain valve	ASCO ASCO Series	
	MA MA Series	
<b>Drain principle</b>		
G	Lever type	
W	Outer thread	
10/14	The numbers means water drain outlet's diameter	

### Range of application

This product is installed at the bottom of water cups which are automatic drianers, air filters and air filter regulators and it can auto discharge the condense water gathered in the water cup.

### Technical requirements

Working medium: Compressed air; Ambient and media temperature: 5-60°C;  
Operating pressure: 0.2-0.8MPa.

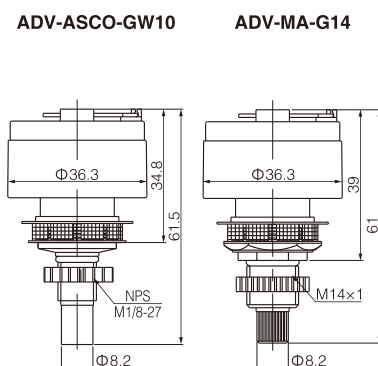
### Product feature

Automatic drain; Air Shut off Drain.

### Points for attention

When using, the drainer should be installed vertically and the drain port facing down.

### Dimensions



Dimensional drawing of water cup conneting part

