

### Valve

3V1  
3V2  
3V2M  
3V3  
3V100  
3V200  
3V300  
4V100  
4V200  
4V300  
4V400  
HY-S1  
HY-S2  
HY-S3  
HY-S4

4M  
3V Manifold  
4V Manifold

Coil

3A100

3A200

3A300

4A100

4A200

4A300

4A400

3A Manifold

4A Manifold

VF3000

VF5000

SY

SY Manifold

MVSD-180

MVSC-220

MVSC-260

MVSC-300

MVSC-460

HB10

3H

4H

TSV

3R

4R

HSV

4HV/4HVL

HV

K<sup>24</sup><sub>34</sub>

MOV

JM

MSV

XQ<sup>23</sup><sub>25</sub>

3F/3FM

4F

FV

K<sup>23</sup><sub>25</sub>

ASC

RE

QE

ST

KA

XQ

AQ



### Symbol

Without lock



With lock



### Ordering code

3F210

08

Model	
3FM210	3/2 way foot pedal valve (mini type)
3F210	3/2 way foot pedal valve

Port size	
Model	Port size
3FM210	M5: M5
	06: 1/8"
	08: 1/4"
3F210	06: 1/8"
	08: 1/4"

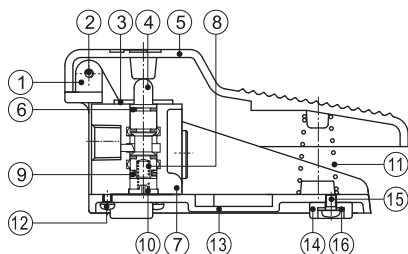
L

Note	
Model	Note
3FM210	Not code
3F210	Blank: Without lock
	L: With lock

□

Thread type	
Port size	Thread type
M5	Not code
1/8"	Blank: PT
	G: G
1/4"	T: NPT

### Inner structure

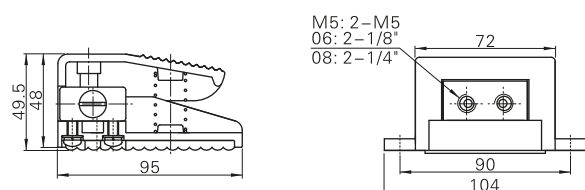


No.	Item	No.	Item	No.	Item
1	Bushing	7	Body	13	Base
2	Fixed screw	8	Spring	14	Base pad
3	Fixed plate	9	E clip	15	Fixed screw
4	Spool	10	Spring bolder	16	Clip
5	Pedal	11	Override spring		
6	O-ring	12	Fixed screw		

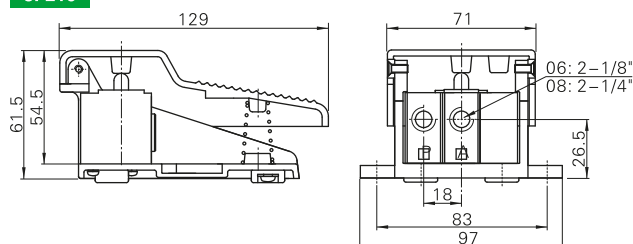
**Note:** ⚠ Note: Lockable type should be added grease periodically to ensure the machine can work regularly.

### Dimensions

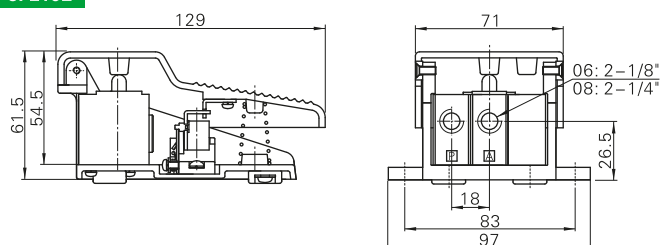
#### 3FM210



#### 3F210



#### 3F210L



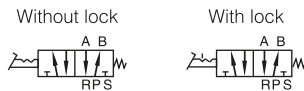


### Specifications

Model	4F210-08	4F210-08L	4F210-08F	4F210-08LF
Fluid	Air (to be filtered by 40µm filter element)			
Operating	Acting type controlled by foot			
Port size ①	1/4"			
Valve type	5/2 Way			
Pressure range	0~1.0MPa(0~145psi)			
Proof pressure	1.5MPa(215psi)			
Temperature (°C)	-20~70			
Material body	Aluminum alloy			
Lubrication	Not required			

① PT thread, G thread and NPT thread are available.

### Symbol



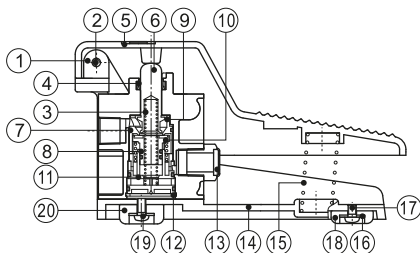
### Product feature

1. The aluminum foot pedal is designed with direct acting, which is steady and reliable.
2. If the duration of direction-change is long, the valves with lock may be selected.
3. The clamping framework is steady and reliable that it is easy and quick to unlock. However, with the limitation of the dimension of structure, it can not bear frequent strong impact.
4. Plastic guard with high strength may be selected.

### Ordering code

4F210		08	L	
Model	Port size	Note	Thread type	
4F210	5/2 way foot pedal valve	Blank	Without lock	Blank
		L	With lock	G
		F	With guard	T
		LF	With lock and guard	NPT

### Inner structure

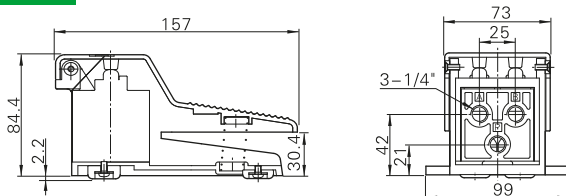


No.	Item	No.	Item	No.	Item	No.	Item
1	Pin	6	Spool	11	Bottom cover	16	Washer
2	Screw	7	O-ring	12	C clip	17	Screw
3	Spring	8	O-ring	13	Silencer	18	Base pad
4	E clip	9	Front cover	14	Base	19	Screw
5	Pedal	10	Piston	15	Pedal spring	20	Base pad

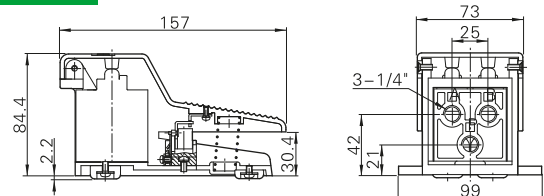
**Note:** ⚠ Note: Lockable type should be added grease periodically the machine can work regularly.

### Dimensions

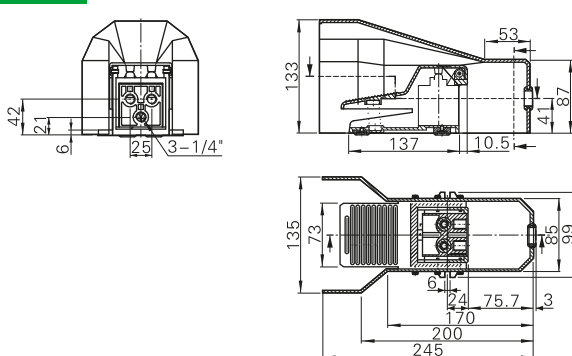
#### 4F210-08



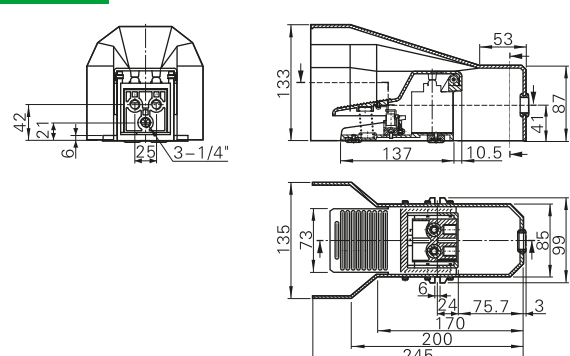
#### 4F210-08L



#### 4F210-08F



#### 4F210-08LF



### Valve

3V1
3V2
3V2M
3V3
3V100
3V200
3V300
4V100
4V200
4V300
4V400
HY-S1
HY-S2
HY-S3
HY-S4
4M
3V Manifold
4V Manifold
Coil
3A100
3A200
3A300
4A100
4A200
4A300
4A400
3A Manifold
4A Manifold
VF3000
VF5000
SY
SY Manifold
MVSD-180
MVSC-220
MVSC-260
MVSC-300
MVSC-460
HB10
3H
4H
TSV
3R
4R
HSV
4HV/4HVL
HV
K <sup>24</sup> <sub>34</sub>
MOV
JM
MSV
XQ <sup>23</sup> <sub>25</sub>
3F/3FM
4F
FV
K <sup>23</sup> <sub>25</sub>
ASC
RE
QE
ST
KA
XQ
AQ

Valve  
3V1  
3V2  
3V2M  
3V3  
3V100  
3V200  
3V300  
4V100  
4V200  
4V300  
4V400  
HY-S1  
HY-S2  
HY-S3  
HY-S4  
4M  
3V Manifold  
4V Manifold  
Coil  
3A100  
3A200  
3A300  
4A100  
4A200  
4A300  
4A400  
3A Manifold  
4A Manifold  
VF3000  
VF5000  
SY  
SY Manifold  
MVSD-180  
MVSC-220  
MVSC-260  
MVSC-300  
MVSC-460  
HB10  
3H  
4H  
TSV  
3R  
4R  
HSV  
4HV/4HVL  
HV  
K<sup>24</sup><sub>34</sub>  
MOV  
JM  
MSV  
XQ<sup>23</sup><sub>25</sub>  
3F/3FM  
4F  
FV  
K<sup>23</sup><sub>25</sub>  
ASC  
RE  
QE  
ST  
KA  
XQ  
AQ

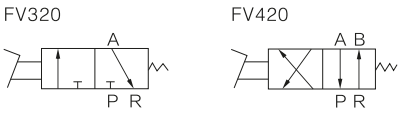


Specifications

Model	FV320	FV420
Fluid	Air(to be filtered by 40µm filter element)	
Valve type	3/2 Way	4/2 Way
Operating	Direct drive type	
Port size ①	06: 1/8"	08: 1/4"
Proof pressure	0~0.8MPa(0~114psi)	
Temperature (℃)	-5~60(28~140°F)	
Lubrication	Not required	

① PT thread, G thread and NPT thread are available.

Symbol

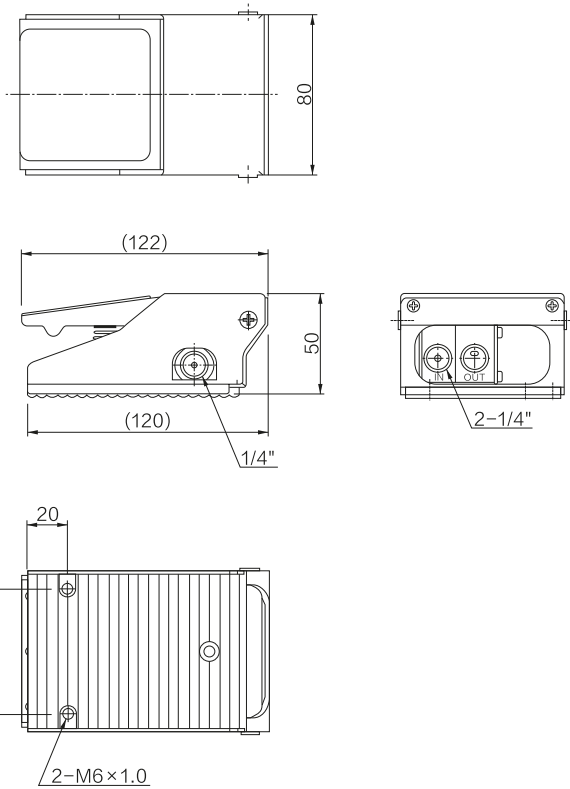


Ordering code

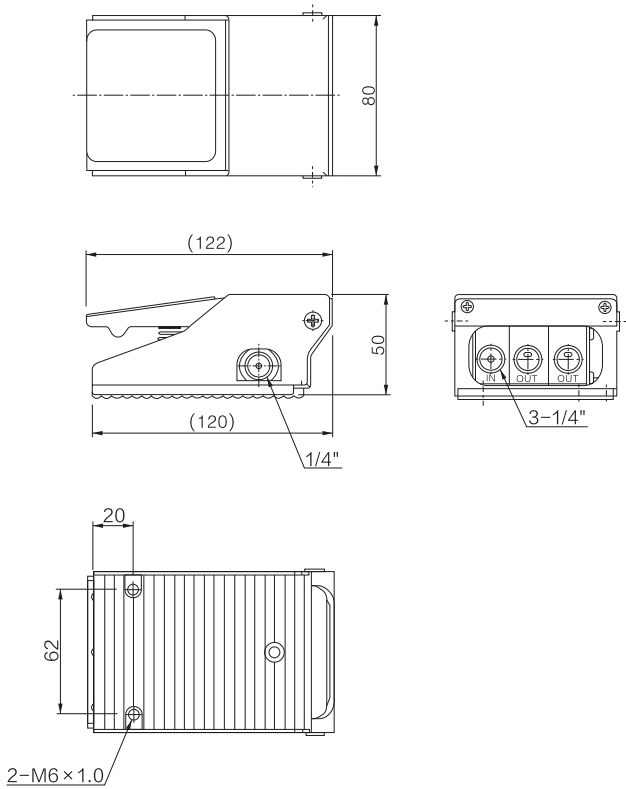
FV		320	08
Model		Position number	Port size
FV	Foot pedal valve (3/2 Way, 4/2 Way)	320 3/2 Way	06 1/8"
		420 4/2 Way	08 1/4"

Dimensions

FV320

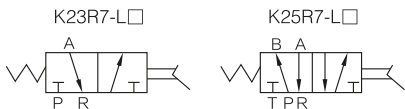


FV420





Symbol



Specifications

Model	K23R7-6	K25R7-6	K23R7-8	K25R7-8
Nominal diameter	6mm		8mm	
Working medium	Air(to be filtered by 40μm filter element)			
Working pressure range	0.05~0.8MPa			
Fluid temperature (℃)	-10~55			
Ambient temperature (℃)	-5~50			
Orifice size	10mm <sup>2</sup>		20mm <sup>2</sup>	
Leakage rate	≤50cm <sup>3</sup> /min			
Operating force	≤80N		≤100N	
Service life (Million times)	≥200			

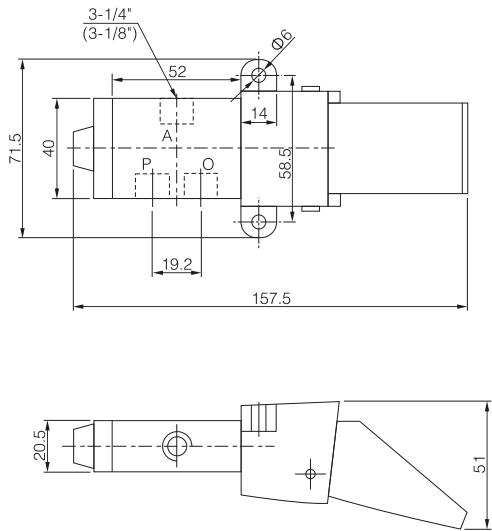
Ordering code

Model	Position number	Control mode
K	23 3/2 Way	R7 Foot pedal valve
	25 5/2 Way	

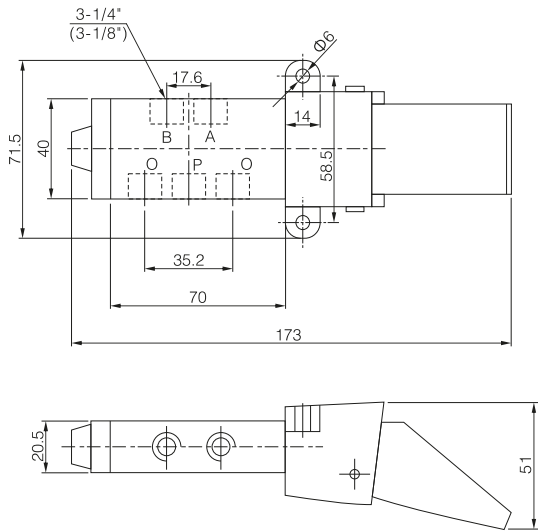
Nominal Diameter	Thread type
6 6mm	Blank PT
8 8mm	G G
	T NPT

Dimensions

K23R7-□



K25R7-□



Valve

3V1
3V2
3V2M
3V3
3V100
3V200
3V300
4V100
4V200
4V300
4V400
HY-S1
HY-S2
HY-S3
HY-S4
4M
3V Manifold
4V Manifold
Coil
3A100
3A200
3A300
4A100
4A200
4A300
4A400
3A Manifold
4A Manifold
VF3000
VF5000
SY
SY Manifold
MVSD-180
MVSC-220
MVSC-260
MVSC-300
MVSC-460
HB10
3H
4H
TSV
3R
4R
HSV
4HV/4HVL
HV
K <sup>24</sup> <sub>34</sub>
MOV
JM
MSV
XQ <sup>23</sup> <sub>25</sub>
3F/3FM
4F
FV
K <sup>23</sup> <sub>25</sub>
ASC
RE
QE
ST
KA
XQ
AQ